

Global Business Reconnect
in association with
Society of Nepalese Architects (SONA)
Presents

ARCHBUILD
EXPO 2024

VENUE

Bhrikutimandap, Kathmandu, Nepal

DECEMBER 05TH-07TH 2024

Organised By



Global Business Reconnect

In Association with



Supported By



ABOUT US

GLOBAL BUSINESS RECONNECT

Global Business Reconnect is a pioneering entity in the realm of B2B solutions, established with the paramount goal of fostering connections and facilitating meaningful interactions across industries. Since its inception in 2000, Global Business Reconnect has been at the forefront of executing impeccable corporate events not only within the expansive landscape of India and Nepal but also across the globe. As a proud subsidiary of Armaans Events, Global Business Reconnect embodies a legacy of excellence and unwavering commitment to client satisfaction.

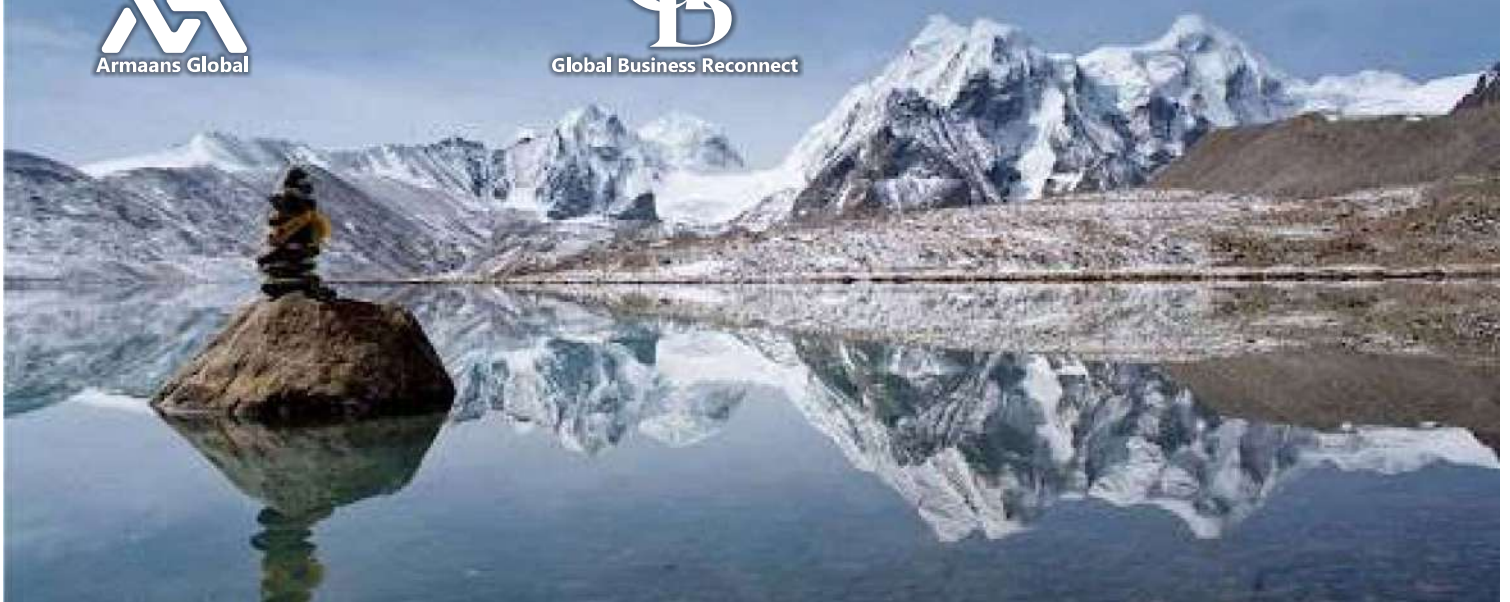
With an illustrious journey spanning over 23 Years, Global Business Reconnect epitomizes boundless passion and an unparalleled wealth of experience within the exhibition and event industry. Through meticulous planning, innovative strategies, and a relentless pursuit of excellence, the company has solidified its position as a trusted partner for businesses seeking to navigate the intricate terrain of corporate events and engagements.



Managed By



Organised By





Society of Nepalese Architects (SONA)

Society of Nepalese Architects (SONA) is the professional organization of Nepalese Architects, established in 1990 by a group of enthusiastic architects who represented government, private sector and academia and the scenario hasn't changed till today. The main objective of SONA is to protect the rights and responsibilities of Nepalese architects and promote architectural profession in Nepal. SONA has been registered as a professional organization in the District Administration Office, Kathmandu and abide by government rules and regulations strictly. SONA has established its own office space at the Churchill Complex, Sundhara, Kathmandu in 2011, supported by full-time staff for day-to-day administration works.

As per the statute of SONA, the Executive Committee with 15 members is elected for a period of two years. There are nine thematic committees headed by prominent architects of Nepal. The committees are responsible for organizing events like seminars, workshops, exhibitions, and discussion programs, generating opinions on emerging issues and advising the government and non-government agencies. SONA has grown over a period of 30 years from a small group of architects, concentrated in Kathmandu Valley, to a nationwide organization with a total membership of nearly 1800, although there are 4000 registered architects in the country. Annually 500 fresh architects graduate from 14 colleges.

SONA's long term goal is to establish distinct identity of architects in Nepalese society by establishing architecture value in the society, expanding its membership and coverage throughout the country. It encourages architect community of Nepal to provide quality service with high level of integrity. It will also strive for promoting architectural character that suits our culture, geography and demands of modern society of Nepal. Our role is to enhance values of diverse vernacular architecture, indigenous building technology and heritage settlements. We also contribute to overcome new challenge of climate change and global warming through creation of sustainable and ecologically responsive built environment. We are also continuously working towards the establishment of Architect's Council in Nepal similar to Nepal Engineering Council. SONA is actively engaged in strengthening network with regional and international associations of architects like Architects Regional Council Asia (ARCASIA) and International Union of Architects (UIA) with the objective of providing platform to Nepalese architects in international architectural arena.





Global Business Reconnect

Director's Message - Global Business Reconnect

Dear Colleagues, Industry Pioneers, and Distinguished Guests,

As the Director of Global Business Reconnect, I am honored to extend a warm welcome to you at ArchBuild Expo 2024. This prestigious event, hosted in collaboration with the Society of Nepalese Architects (SONA), marks a significant moment in our collective journey to shape the future of architecture, engineering, and design.

At Global Business Reconnect, our mission has always been to bridge gaps, foster collaborations, and inspire innovation across industries. ArchBuild Expo 2024 stands as a testament to this mission, bringing together a diverse community of professionals to explore the cutting-edge of technology, design, and sustainable practices. This expo is not just an event; it is a platform where ideas are exchanged, partnerships are forged, and the foundations of tomorrow's built environment are laid.

We believe that the built environment is more than just structures; it is a reflection of our aspirations, values, and progress. As we navigate the challenges of modern urbanization, climate change, and resource management, it is crucial that we, as industry leaders, come together to share our knowledge and experiences. ArchBuild Expo 2024 offers an unparalleled opportunity for this exchange, presenting new technologies, materials, and methodologies that will shape the future of our cities and communities.

For the next generation of architects, engineers, and designers, this expo is a gateway to learning, inspiration, and growth. We are committed to providing a platform where young professionals can engage with industry veterans, explore innovative products, and contribute to meaningful discussions that will define the future of our industry.

I encourage all participants to take full advantage of the opportunities presented at ArchBuild Expo 2024. Let us collaborate, innovate, and build a future that is sustainable, resilient, and reflective of our shared vision.

Thank you, and I look forward to your active participation at ArchBuild Expo 2024.

Warm regards,

Director
Global Business Reconnect



President Message - Society Of Nepalese Architects

Dear Colleagues, Industry Leaders, and Esteemed Guests,

It is with great pride that I welcome you to ArchBuild Expo 2024, a pivotal event uniting the brightest minds in architecture, engineering, and design. This expo, organized in collaboration with the Global Business Reconnect, serves as both a showcase for innovation and a forum for critical discussions about the future of our built environment.

At SONA, we understand that our responsibility as architects extends beyond creating physical structures. Architecture embodies national identity and reflects a country's economic strength, as seen in landmarks like the Durbar Squares and other traditional buildings built during the Licchavi and Malla period. We, as architects, are the creators of these symbols of progress and innovation.

Our society, community, and leaders all envision beautiful and vibrant places. However, these dreams are realized through well-planned physical structures. If not thoughtfully designed, these structures can result in poorly planned towns and cities.

Architecture is more than just functionality; it enhances aesthetic value and contributes to a place's identity. It also signifies national prosperity and can boost economic development through tourism. Historical landmarks, like those from the Licchavi and Malla periods, highlight our cultural heritage and past prosperity, while attracting global visitors.

The architecture exhibition features inspiring works by Nepali and International architects, showcasing the creativity and diversity in the field. It highlights unique approaches from both local and global perspectives, celebrating innovative solutions and cultural heritage in the built environment.

ArchBuild Expo 2024 is an invaluable opportunity for architects and engineers to exchange insights and address the challenges of developing private and public spaces. These discussions are vital for advancing our profession and benefiting society at large. Additionally, the expo will introduce new technologies and materials, helping professionals make informed decisions for their projects.

This event also offers students and young professionals a chance to expand their knowledge, explore new products, and learn from industry leaders. I invite architects, engineers, contractors, builders, and building material companies to join us in making ArchBuild Expo 2024 a success.

Together, let us build a future that is innovative, sustainable, and inspiring for all.

Thank you, and I look forward to seeing you at ArchBuild Expo 2024.





Global Business Reconnect



Global Business Reconnect and Society of Nepalese Architects Unite for ArchBuild Expo

Dear Stakeholders, Partners, and Enthusiasts of the Architectural and Construction Industries,

We are delighted to announce that Global Business Reconnect and the Society of Nepalese Architects (SONA) are joining forces to organize the ArchBuild Expo 2024, a premier event dedicated to the fields of architecture, design, building, and construction. The expo is scheduled to take place from December 5-7th, 2024, at the Everest Hotel Madan Bhandari Road, Kathmandu, Nepal.

This collaboration represents a unique opportunity to bring together industry leaders, professionals, innovators, and enthusiasts under one roof to explore the latest advancements, trends, and technologies that are shaping the future of architecture and construction. The ArchBuild Expo 2024 aims to provide a dynamic platform for networking, knowledge sharing, and showcasing cutting-edge products and services that are driving the industry forward.

Global Business Reconnect, with its extensive experience in the B2B exhibition industry, and SONA, as the leading professional body for architects in Nepal, are committed to making this event a landmark in the region's architectural and construction landscape. Our joint vision is to foster meaningful interactions, encourage sustainable practices, and inspire innovative solutions that will contribute to the development of a resilient and forward-looking built environment.

As we embark on this journey together, we invite architects, engineers, builders, designers, students, and industry professionals to join us at ArchBuild Expo 2024. Your presence and participation will not only enrich the discourse but also contribute to the collective goal of advancing the architectural and construction sectors in Nepal and beyond.

For more information about the event, including exhibitor opportunities, registration details, and the program schedule, please visit our official website or contact our organizing team.

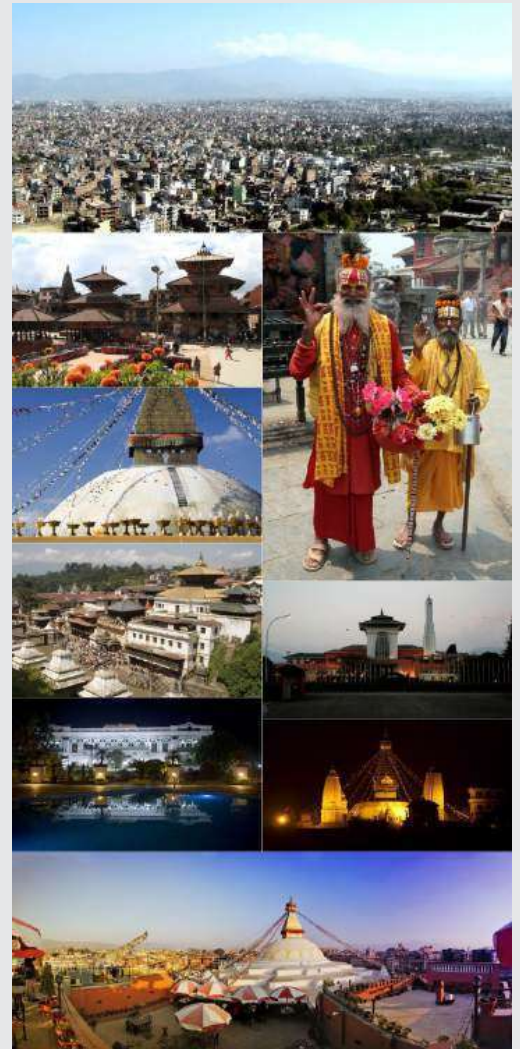
We look forward to seeing you at ArchBuild Expo 2024, where ideas meet innovation and vision meets reality.



WELCOME TO NEPAL



Nepal, with over 30 million inhabitants, is a mesmerizing blend of history, culture, and natural beauty. Nestled in the heart of the Himalayas, this South Asian nation captivates with its ancient heritage and modern vibrancy. Home to the towering Mount Everest, a UNESCO World Heritage site, Nepal is steeped in natural grandeur. Its spiritual significance is exemplified by Lumbini, the birthplace of Lord Buddha. With vibrant festivals, delectable cuisine, and a mosaic of traditions, Nepal invites enthusiasts to explore its many wonders. From the bustling streets of Kathmandu to the serene tranquility of Pokhara, this country offers an unforgettable and enriching experience, earning it the title "Roof of the World." Along with several historical, natural, and religious tourist destinations, including Bhaktapur, Patan, Chitwan, and Sagarmatha, Nepal is also home to several UNESCO World Heritage Sites.



Managed By



Armaans Global

Organised By



Global Business Reconnect

WELCOME TO NEPAL



- Tourism hub of the Himalayas, known for its stunning landscapes and adventurous treks
- Rapidly growing economy, with significant potential in tourism, agriculture, and hydro power sectors
- Strategically located between India and China, serving as a vital trade route
- 8 of the world's 14 highest peaks, including Mount Everest, the tallest mountain on Earth
- Lumbini, the birthplace of Lord Buddha, a UNESCO World Heritage site
- Vibrant cultural heritage, with festivals like Dashain, Tihar, and Holi
- Diverse population, with over 100 ethnic groups and 123 languages spoken
- Major contributor to global peace, having supplied troops for various UN peacekeeping missions
- Significant potential for hydro power, with numerous rivers and waterfalls
- Growing educational sector, with numerous universities, colleges, and technical institutions



Managed By



Organised By





Welcome To Nepal Country of Himalaya

Kathmandu, the capital of Nepal, is a city steeped in history and tradition. Once a flourishing center of trade between India and Tibet, it became a significant hub for Buddhism and Hinduism. The city's rich cultural heritage is a result of centuries of dynastic rule, from the Licchavi and Malla kings to the Shah dynasty. This historical evolution has left a legacy of stunning temples, palaces, and stupas, such as the Swayambhunath (Monkey Temple) and Pashupatinath. Today, Kathmandu, with a population of over one million, retains its vibrant and spiritual ambiance, offering visitors a unique blend of ancient culture and modern dynamism. The bustling streets, filled with the aromas of Nepali cuisine and the sounds of traditional music, provide an unforgettable and immersive experience.

Managed By



Organised By



Theme

Of all the developing countries in the world, Nepal is perhaps the one that has experienced significant changes in the process of urbanisation. The speed of urbanisation poses unprecedented managerial and policy challenges, including sustainable development, carbon-free growth, energy efficiency, greenhouse effects, etc. Now is the time, therefore, when all the stakeholders need to deliberate on all these issues and options. With this backdrop, the Nepal Institute of Architects (NIA) is pleased to organise its three-day National Convention 2024 in the historic city of Kathmandu, with a central theme of Development augmentation, enhancement, development, growth, promotion, magnification, enrichment, and so on. In line with this theme, ARCHBUILD Expo 2024 will be a forum for debate and deliberation on ways and means to augment and enhance resources for a balanced and uninterrupted pace of development.

Managed By



Armaans Global

Organised By



Global Business Reconnect





GOALS & OBJECTIVE

- 1. Inspiration:** The expo aims to inspire architects, designers, engineers, and construction professionals by showcasing cutting-edge projects, innovative materials, and forward-thinking designs. This could include displaying iconic architectural works from around the world, highlighting sustainable building practices, and presenting visionary concepts for the future of construction.
- 2. Education:** Archbuild Expo seeks to educate attendees about the latest trends, technologies, and best practices in architecture and construction. This might involve hosting seminars, workshops, and panel discussions led by industry experts on topics such as green building, digital design tools, modular construction, and smart home technologies.
- 3. Innovation:** The expo serves as a platform for fostering innovation within the architecture and construction sectors. This could involve featuring emerging technologies like 3D printing, augmented reality, and building information modeling (BIM), as well as showcasing groundbreaking architectural designs that push the boundaries of creativity and functionality.
- 4. Networking:** Archbuild Expo provides opportunities for professionals to network, collaborate, and forge partnerships with colleagues, suppliers, and industry leaders. This could include organized networking events, matchmaking sessions, and exhibitor showcases where attendees can connect with potential collaborators and explore new business opportunities.

Managed By



Organised By



VISITOR PROFILE

- Architects
- Interior Designers
- Engineers
- Builders
- MEPS
- Contractors
- Designers
- HNIs
- Facade Consultants



Managed By



Organised By





WHY VISIT

- **Explore Innovations:** Discover the latest technological advancements and innovative solutions reshaping the architectural landscape.
- **Networking Opportunities:** Connect with industry leaders, architects, designers, and professionals from around the globe, fostering collaborations and partnerships. ✕
- **Inspiration and Creativity:** Immerse yourself in a world of creativity and inspiration, gaining fresh perspectives and ideas to fuel your projects and designs. ⚡
- **Stay Updated:** Stay abreast of emerging trends, materials, and techniques that are driving the future of architecture and construction.
- **Educational Seminars and Workshops:** Attend informative seminars, workshops, and keynote presentations delivered by experts, providing valuable insights and knowledge.
- **Product Demonstrations:** Experience firsthand demonstrations of cutting-edge products, tools, and technologies revolutionizing the industry.
- **Networking Opportunities:** Engage with peers, exchange ideas, and build relationships within the architectural community, fostering professional growth and development.
- **Source Suppliers and Partners:** Discover new suppliers, partners, and resources to enhance your projects and meet the demands of your clients. ✕
- **Environmental Sustainability:** Learn about sustainable practices, green building initiatives, and eco-friendly materials that contribute to a more sustainable built environment.
- **Explore Future Trends:** Get a glimpse into future trends and forecasts in architecture and design, gaining valuable insights to stay ahead in a rapidly evolving industry.

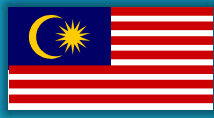
Managed By



Organised By



INVITED COUNTRIES



Managed By

Organised By



Armaans Global



Global Business Reconnect

WHY SPONSOR OR EXHIBIT?

- **Exposure and Brand Visibility:** Gain exposure and increase brand visibility by showcasing your products, services, and innovations to a targeted audience of industry professionals, architects, designers, and decision-makers.
- **Networking Opportunities:** Engage with potential clients, partners, suppliers, and industry leaders, fostering valuable relationships and collaborations.
- **Market Expansion:** Expand your market reach and explore new business opportunities in emerging markets and regions, facilitating growth and expansion for your company.
- **Thought Leadership:** Position your brand as a thought leader and industry expert by participating in panel discussions, seminars, and workshops, sharing insights, expertise, and best practices with attendees.
- **Product Launches and Demonstrations:** Launch new products, technologies, and solutions to a captive audience, generating excitement and interest around your offerings.
- **Lead Generation:** Generate high-quality leads and qualified prospects through face-to-face interactions, demonstrations, and networking opportunities, nurturing relationships and driving sales.
- **Market Research:** Gain valuable market insights, feedback, and trends by interacting with attendees, competitors, and industry experts, informing strategic decision-making and product development.
- **Brand Credibility:** Enhance brand credibility and reputation by associating your brand with a reputable industry event, demonstrating your commitment to innovation, excellence, and professional development.
- **Visibility in the Industry:** Strengthen your presence and visibility within the industry by participating in key industry events, conferences, and exhibitions, reinforcing your brand's position as a leader in the market.
- **ROI and Business Growth:** Maximize return on investment (ROI) and drive business growth by leveraging the exposure, networking, and lead generation opportunities offered by sponsoring or exhibiting at the Archbuild Expo.

Managed By



Armaans Global

Organised By



Global Business Reconnect



Smart Security & Surveillance Systems



Smart Home Solutions



Integrated Building Systems

Smart Lighting Solutions



Facility, Fire & Water Management Systems

Elevators & Escalators



Electricals, Wires & Cables

Agile Home & Office Automation Systems



Switches & Switch Gears

Intelligent Entertainment Systems





**House
of Sleep**

**Architectural
Lighting**



**Houseware
& Appliances**

**Air Conditioning
& Refrigeration**



**Rugs &
Carpets**

**Commercial
& Residential
Furniture**



**Home
Textiles**

**Furnishings & Allied
Products**



**Landscape
Architecture &
Open Spaces Solutions**

**Home Interiors
& Artifacts**





Wall Finishes & Surfaces

Modern Kitchen Technologies



Roofing Cladding & Facades

Innovative Bath Solutions



Steel & Allied Products

Contemporary Bath Solution



Industrial, Commercial & Residential Floorings & Surfaces

Modern Marble & Granite Solutions



Structural & Profile Systems

Modish Tiles & Ceramics





Fittings Hardware & Components

Doors & Windows



Plumbing Pipes & Fittings

Ply Veneers & Laminates



Construction Chemicals

Paints & Coat



Machinery Installations & Technology

Glass Railing Systems



Architectural Design & Management Software

Concrete & Building Material





High End Interiors & Artworks

Signature Furnishing Collection



Exclusive Home Automation Solutions

Fine Furnishings



Contemporary Glass & Glass Systems

Premium Lighting Products



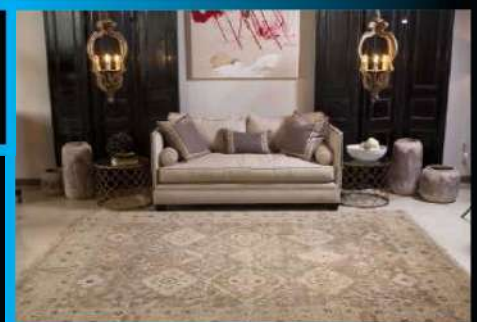
Decorative Made Ups

Elegant Kitchen Designs



Luxury Rugs & Carpets

Luxury Surfaces





VISITOR SEGMENTS

Architects &
Interior designers

Builders,
Developers
& Town planners

Civil Engineers
& Structural
Engineers

Facade
consultants

Hoteliers &
Purchase Heads

Landscape
Architects

Facility
Managers
& PMCs

Industry Relevant
Associations

Fabricators
Contractors

Manufacturing
Brands

Real Estate
professionals

Media
promoters

Dealers &
Distributors

Lighting &
MEP consultants

Ministry & Embassy
Representatives &
Trade officers



WHY EXHIBIT?

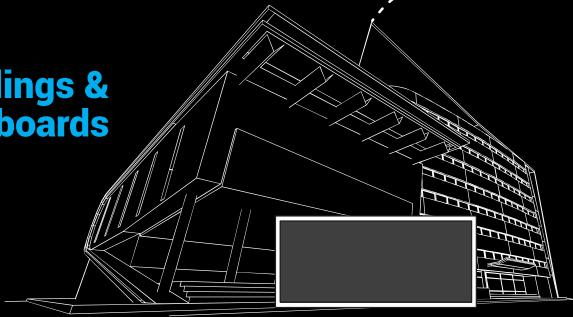


Showcase our Brand to over

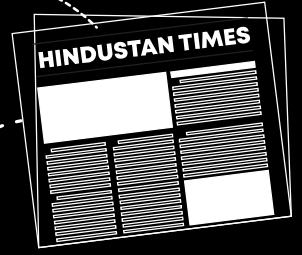
3000+

Architects, Interior Designers,
Builders, Contractors and
Industry leaders

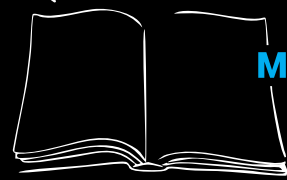
Hoardings & Billboards



Social Media
PRESENCE



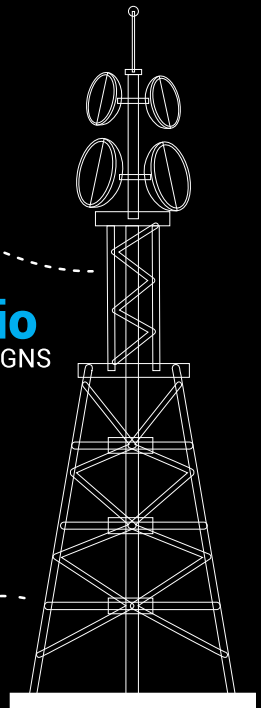
News Paper
ADS CAMPAIGNS



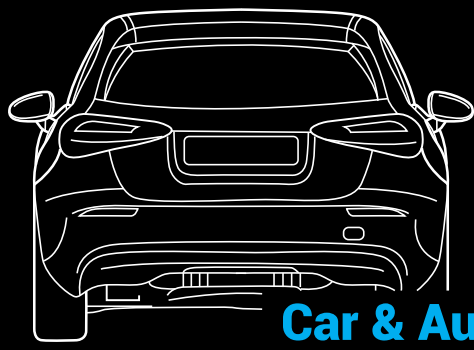
Magazine
ADS



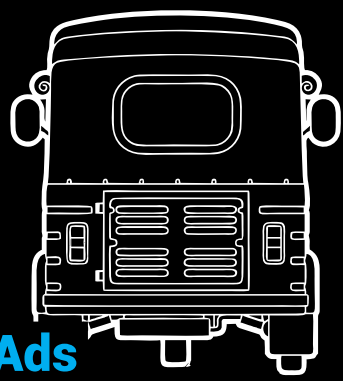
EVENT COVERED BY
Vloggers



Radio
CAMPAIGNS



Car & Auto Ads



Mega promotions for mega reach

SPONSORSHIP OPTIONS

Title Sponsor – NPR 82,00,000

- Complimentary stall ad measuring 102 sq mtrs
- Dedicated Drone show for 15 mins along with entire setup
- Commercial Presentation 2 slots of 15-15 mins every day at Conference.
- Part of 1 Panel Discussion
- Logo presence on marketing collateral's
- Logo presence on event website
- Logo presence on social media posts
- Logo presence on sponsor announcement social media posts
- Static product promotion post on show's social media
- Product promotion video on show's social media handles
- Logo Presence on Side wings of Conference
- Logo presence on Email campaigns carried out for the show
- Dedicated email campaign for company promotion – 3 times
- Logo presence on wings of backdrop
- Logo presence on Welcome Delegates banner
- Complimentary 4 pages ad in Conference Souvenir
- Logo Presence on Award - that we do additionally***

Co-Sponsor - NPR 35,00,000 Taxes

- Complimentary stall ad measuring 72 sq mtrs
- 3D Mapping of product
- Complimentary registration for 10 delegates
- Commercial Presentation slot of 10 mins at Conference
- Logo presence in newspaper ads and advertorial
- Logo presence on marketing collaterals
- Logo presence on event website
- Logo presence on social media posts
- Logo presence on sponsor announcement social media posts
- Static product promotion post on show's social media
- Product promotion video on show's social media
- Logo presence on Email campaigns carried out for the show
- Dedicated email campaign for company promotion – 1 times
- Logo presence on wings of backdrop
- Logo presence on Welcome Delegates banner
- Complimentary 2 pages ad in Conference Souvenir

Presented By - NPR 40,000,00 + Taxes

- Complimentary stall ad measuring 84 sq mtrs
- AR Light Show for product
- Complimentary registration for 12 delegates
- Commercial Presentation slot of 15 mins at Conference
- Opportunity nominate a panellist during one panel discussion
- Logo presence in newspaper ads and advertorial
- Logo presence on marketing collaterals
- Mention in FM Radio promotion
- Logo presence on event website
- Logo presence on social media posts
- Logo presence on sponsor announcement social media posts
- Static product promotion post on show's social media
- Product promotion video on show's social media
- Logo presence on Email campaigns carried out for the show
- Dedicated email campaign for company promotion – 2 times
- Logo presence on wings of backdrop

Diamond Sponsor NPR 17,00,000

- Complimentary stall ad measuring 64 Sq mtrs
- Complimentary registration for 8 delegates
- Commercial Presentation slot of 10 mins at Conference
- Logo presence in newspaper ads and advertorial
- Logo presence on marketing collateral's
- Logo presence on event website
- Logo presence on sponsor announcement social media posts
- Static product promotion post on show's social media
- Product promotion video on show's social media
- Logo presence on Email campaigns carried out for the show
- Logo presence on wings of backdrop
- Logo presence on Welcome Delegates banner
- Complimentary 2 pages ad in Conference Souvenir

Platinum Sponsor NPR 15,00,000

- Complimentary stall ad measuring 54 Sq mtrs
- Complimentary registration for 6 delegates
- Logo presence in newspaper ads and advertorial
- Logo presence on marketing collaterals
- Logo presence on event website
- Logo presence on sponsor announcement social media posts
- Static product promotion post on show's social media
- Product promotion video on show's social media
- Logo presence on Email campaigns carried out for the show
- Logo presence on wings of backdrop
- Logo presence on Welcome Delegates banner
- Complimentary 1 page ad in Conference Souvenir

Gold Sponsor NPR 10,00,000

- Complimentary stall ad measuring 48 sq mtrs
- Complimentary registration for 5 delegates
- Logo presence on marketing collaterals
- Logo presence on event website
- Logo presence on sponsor announcement social media posts
- Static product promotion post on show's social media
- Logo presence on Email campaigns carried out for the show
- Logo presence on wings of the backdrop
- Logo presence on Welcome Delegates banner
- Complimentary 1 page ad in Conference Souvenir

Notes

- Sponsorship charges are exclusive of taxes, as applicable
- Sponsorship will be offered on 'first-come-first-served' basis

SPONSORSHIP OPTIONS

Gala Dinner Sponsor NPR 15,00,000

- Complimentary stall ad measuring 36 sq mtrs
- Complimentary registration for 4 delegates
- Logo presence on marketing collaterals
- Logo presence on event website
- Logo presence on sponsor announcement social media posts
- Static product promotion post on show's social media
- Sponsorship Acknowledgment at dinner venue
- Logo on dinner invitation card
- Logo presence on Email campaigns carried out for the show
- Logo presence on Welcome Delegates banner

Kit Bag Sponsor NPR 4,50,000

- Complimentary stall ad measuring 18 sq mtrs
- Complimentary registration for 2 delegates
- Logo presence on marketing collaterals
- Logo presence on event website
- Logo presence on sponsor announcement social media posts
- Logo presence on Email campaigns carried out for the show
- Logo presence on Delegate Kit bags
- Logo presence on Welcome Delegates banner

Registration Sponsor NPR 3,50,000

- Complimentary stall ad measuring 18 sq mtrs
- Complimentary registration for 2 delegates
- Logo presence on marketing collaterals
- Logo presence on event website
- Logo presence on sponsor announcement social media posts
- Logo presence on Email campaigns carried out for the show
- Sponsorship Acknowledgment at Registration area
- Logo presence on entry badges
- Logo presence on Welcome Delegates banner
- 10 Minutes Speaking Time on Stage

Student Workshop Sponsor NPR 3,00,000

- Complimentary stall ad measuring 12 sq mtrs
- Complimentary registration for 1 delegate
- Commercial Presentation slot of 10 mins at one workshop
- Logo presence on marketing collaterals
- Logo presence on event website
- Logo presence on sponsor announcement social media posts
- Logo presence on Email campaigns carried out for the show
- Sponsorship Acknowledgment at sponsored workshop venue
- Logo presence on Welcome Delegates banner

• Exhibitor Package

Shell Scheme NPR 10,500 per Sqmt Raw Space NPR 9000 per Sqmt
Minimum Space 9 sqmt

Lunch Sponsor NPR 9,00,000

- Complimentary stall ad measuring 28 sq mtrs
- Complimentary registration for 3 delegates
- Logo presence on marketing collaterals
- Logo presence on event website
- Logo presence on sponsor announcement social media posts
- Logo presence on Email campaigns carried out for the show
- Sponsorship Acknowledgment at lunch venue
- Logo on lunch invitation card
- Logo presence on Welcome Delegates banner

Silver Sponsor NPR 7,50,000

- Complimentary stall ad measuring 30 sq mtrs
- Complimentary registration for 4 delegates
- Logo presence on marketing collaterals
- Logo presence on event website
- Logo presence on sponsor announcement social media posts
- Logo presence on Email campaigns carried out for the show
- Logo presence on wings of the backdrop
- Logo presence on Welcome Delegates banner
- Complimentary 1 page ad in Conference Souvenir

Heritage Walk Sponsor NPR 3,50,000

- Complimentary stall ad measuring 15 sq mtrs
- Complimentary registration for 2 delegates
- Logo presence on marketing collaterals
- Logo presence on event website
- Logo presence on sponsor announcement social media posts
- Logo presence on Email campaigns carried out for the show
- Logo presence at the start & end point of the walk
- Logo presence on Welcome Delegates banner

Session Sponsor NPR 3,00,000

- Complimentary stall ad measuring 9 sq mtrs
- Complimentary registration for 1 delegate
- Logo presence on marketing collaterals
- Logo presence on event website
- Logo presence on sponsor announcement social media posts
- Logo presence on Email campaigns carried out for the show
- Sponsorship Acknowledgment at respective session
- Logo presence on Welcome Delegates banner
- 10 Minutes Speaking Time on Stage

Notes

- Sponsorship charges are exclusive of taxes, as applicable
- Sponsorship will be offered on 'first-come-first-served' basis

CERA

hindware



Nexion
ITALIAN STYLE THAT INSPIRES



AluPure
ALUMINIUM SYSTEMS



L&T Electrical & Automation

**KNP
NEROLAC**
HEALTHY HOME PAINTS



HAVELLS

Lingel
since 1959
GERMANY

Supreme

Greenply
PLYWOOD

ASSA ABLOY

DAIKIN



**Orient
FireCurtains**
India PVT Ltd.

Global Fire Control Solutions



EURONICS

R

REYNAERS
aluminum



Nugreen Building Technologies Pvt. Ltd.
DELHI | MUMBAI | BANGALORE | HYDERABAD | PUNE | CHENNAI | BANGALORE

DUROTM

**TATA
TISCON**
JOY OF BUILDING



Roff
TILE & STONE FIXING EXPERT

JINDAL
STEEL & POWER

KNAUFCEILING
Solutions



VENTURA
Premium Architectural Surfaces
Since 1994

viega

SAINT-GOBAIN



gyproc
SAINT-GOBAIN

Canon

BLAUPUNKT

Fenesta
Better by Design

Sintex
SINCE 1975

ALSTONE[®]
WPC & SILICONE

Hettich

KIN LONG
For Better Living

VMZINC

REYNOARCH[®]
ALUMINIUM COMPOSITE PANELS

multi**tubo**
systems

EPSON[®]



Tipwood



WT
THE WHITE TEAK COMPANY
By
asianpaints



BECKER
GERMANY

PANS
GERMANY

: : Fundermax
For you to create

ANTI EK⁷
DISCOVER LUXURY



orientbell
tiles

VOX



fanzart[®]
LUXURY DESIGNER FANS
SINCE 2012

Jal
Joy of India

LIOLI[®]
ESTHETIC MARMORÉAL

Saraswati
Wood Pvt. Ltd.
THERMOWOOD | IPE | WPC

AJAY MAINI GROUP
MAINI
YOUR PARTNER IN PROGRESS

REPL[®]
Infosystem
The Power of Knowledge



ETERNIA[™]

TAITON[®]



TECHNORAIL[™]
Inspiring innovations

INDOASIAN[®]
MAKES SENSE

MahattaART

tp
technopaints

SKIPPER
PIPES
SKIPPER FOR LIFE

Response
Fabric For The World's Best Offices

CATALANO
THE ESSENCE OF CERAMICS

PH. 91 22 6688 0000 0000 0000 0000
FACADE LIGHTING
SERVICES L.L.C

AFC
FURNITURE SOLUTIONS

Durian®

SKYDECOR®
ELEGANT LAMINATES

proflex
Innovate. Lead.
ROOFING SOLUTIONS

pepperfry

SUN
Stellar
Rising with the sun...

Purever®
STAINLESS STEEL EXPORTS SINCE 1982

RHINOX
PIPING SOLUTIONS

KARNAV®
FLOORS | DOORS | VENEERS

RAFS
TOTAL LAMINATE POWDER SYSTEM

KJS
CONCRETE
GREY TO GREEN

Ruah
TECH SOLUTIONS

snaptrude

GWC
GARG WATERPROOFING COMPANY

DIVINE
INDUSTRIES

TECH
VENDORS
INDIA PRIVATE LIMITED



ConstructOye

M SPACE
TECHNOLOGIES & SERVICES

Reloto
AUTOMATION



Ornate Solar

TPRS
GLASS

Trust TPRS to explore Glass
TPRS GLASS (SINCE 1995)

DOMUM®

DEAL

Office furnitures & Furnishings



PyraMatics
Technologies Pvt Ltd



HYGREE

ONYX™

www.onyxfurniture.in

INTERSOL

VARAY
IMAGE RUNNERS
You Trust - We Deliver